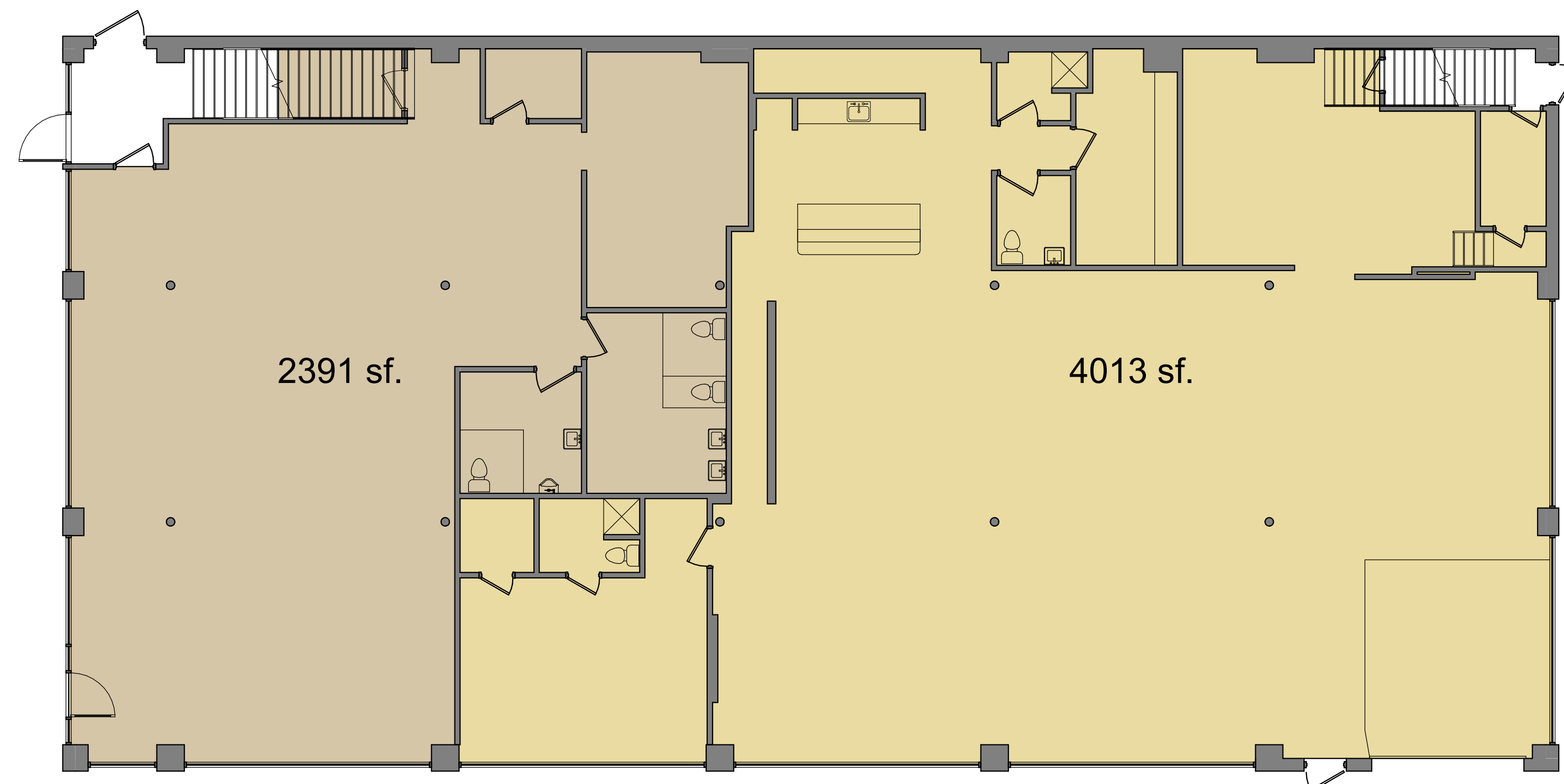


**2** level 2 floor plan  
 scale: 1/8" = 1'-0" north



**1** level 1 floor plan  
 scale: 1/8" = 1'-0" north

existing drawings for  
**1625 Oak Street**  
 1625 Oak Street  
 Kansas City, Missouri

date  
 07.05.2016  
 drawn by  
 dm  
 checked by  
 dAE  
 revisions

**NOT FOR CONSTRUCTION**

sheet number  
**A2.1**  
 drawing type  
 tenant layout  
 project number  
 16087